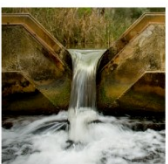




WaterBase©
an
Integrated Data Management System (IDMS)
by Water Data Services

Overview – Key Elements





Design Brief

- Build a new IDMS system with:
 - Open Architecture
 - Web friendly - live data presentation
 - Client/Server + optional web interface
 - Better integration between Time Series data and Discrete Data.
 - Improved data flow from source to user





Design Brief

continued....

- The one system for Quantity, Quality, Ground Water, and Meteorological Data
- Separate storage for RAW, InBasket, VERIFIED and DERIVED Data
- Strong on statistical analysis and reporting
- Intuitive and easy to use
- Outstanding support





Main Features

- Integrates flow & water quality into one manageable system
- Capacity to store groundwater data
- Protects Raw data and separates Derived data
- Powerful graphical editor
- Powerful graphical viewer - multiple sites and parameters for comparison





Main Features

continued

- Converts one parameter to another by using Conversion Tables
- WDTF format - automatically export to Bureau of Meteorology
- Manual & automatic import/export
- Facility for multiple formats using a parameter mapping process
- Export from any table to MS Windows programs





Time Series Reports

Graphing

- Flexible
- Customisable
- Informative
 - Add additional series
 - Annotate
 - Change appearance
- Reports
 - Push button
 - Consistent standard appearance
 - Export to many formats (pdf, Word, excel, PowerPoint etc)



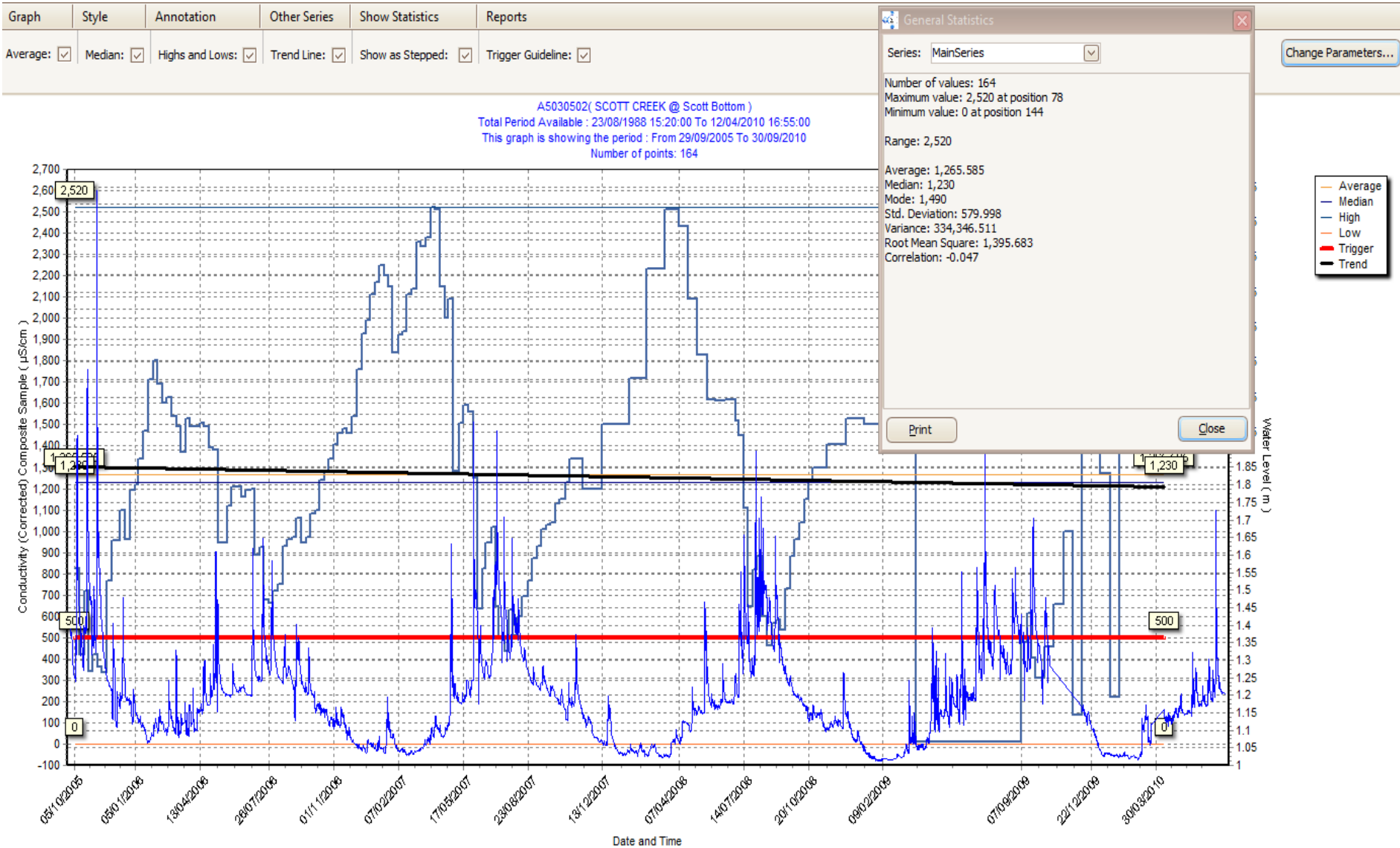


Time Series Reports

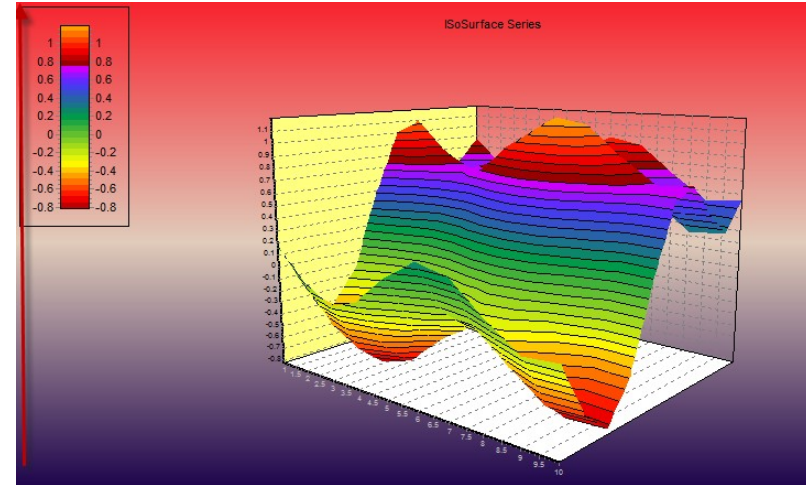
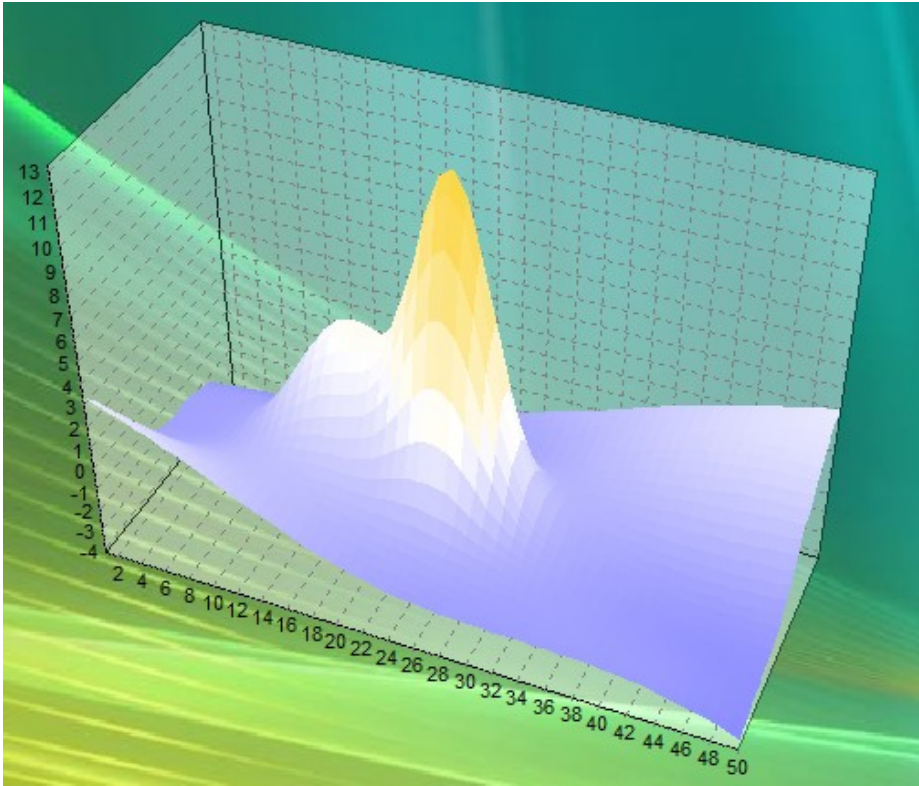
continued

- Undertake statistical analyses ranging from basic statistical computations to detailed Mann-Kendall trend analyses;
- 3D plotting and graphing capabilities incl. wind, profiles;
- Fully customisable
 - Legends
 - Annotation
 - inclusion of single point data such as flow gauging
 - customisable styles/skins
 - export to excel, word, pdf, xml and/or direct print.

Graphing - example

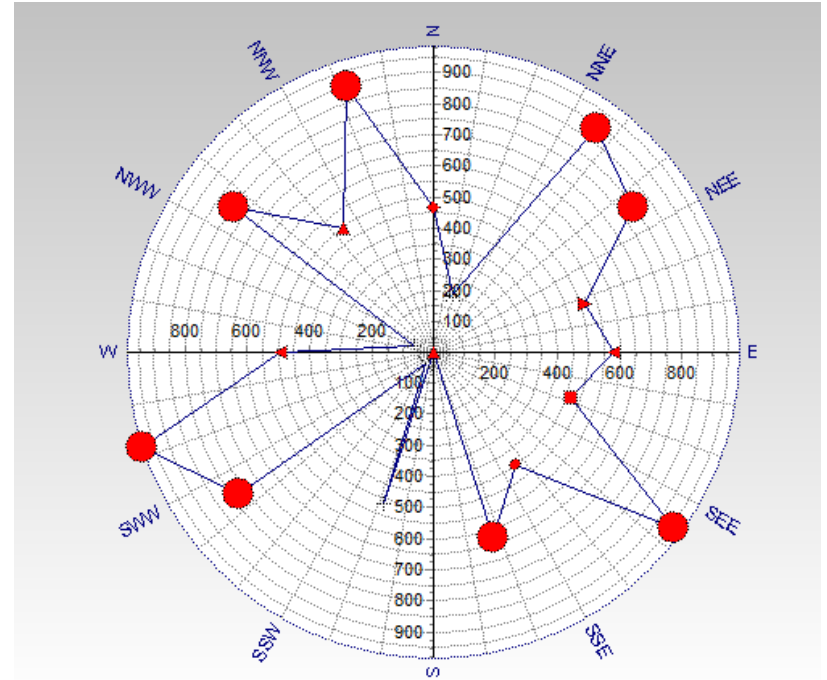
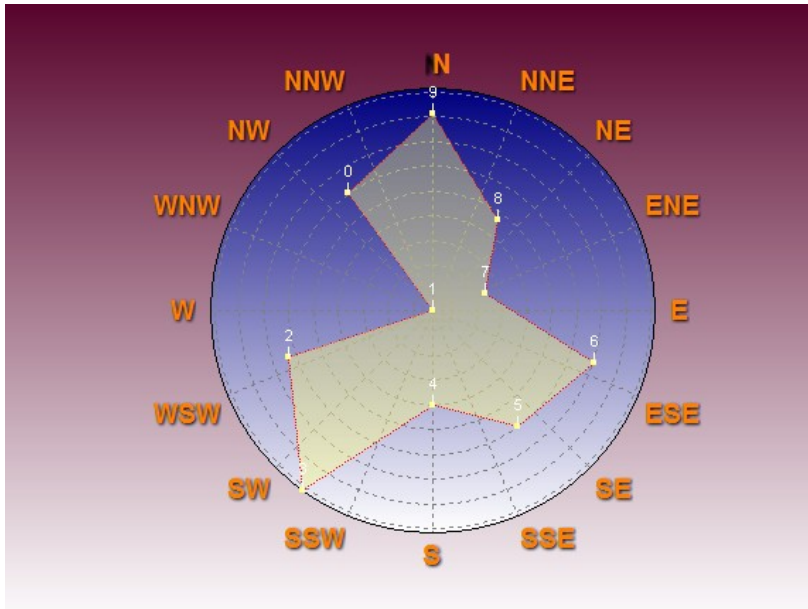


Iso-Surfaces for profiling



- For plotting x y z
WaterBase TimeSeries includes
- Date Time
 - Value
 - Depth
- Can plot profiles over time
•Ideal for Murray River EC profiles

Wind Rose



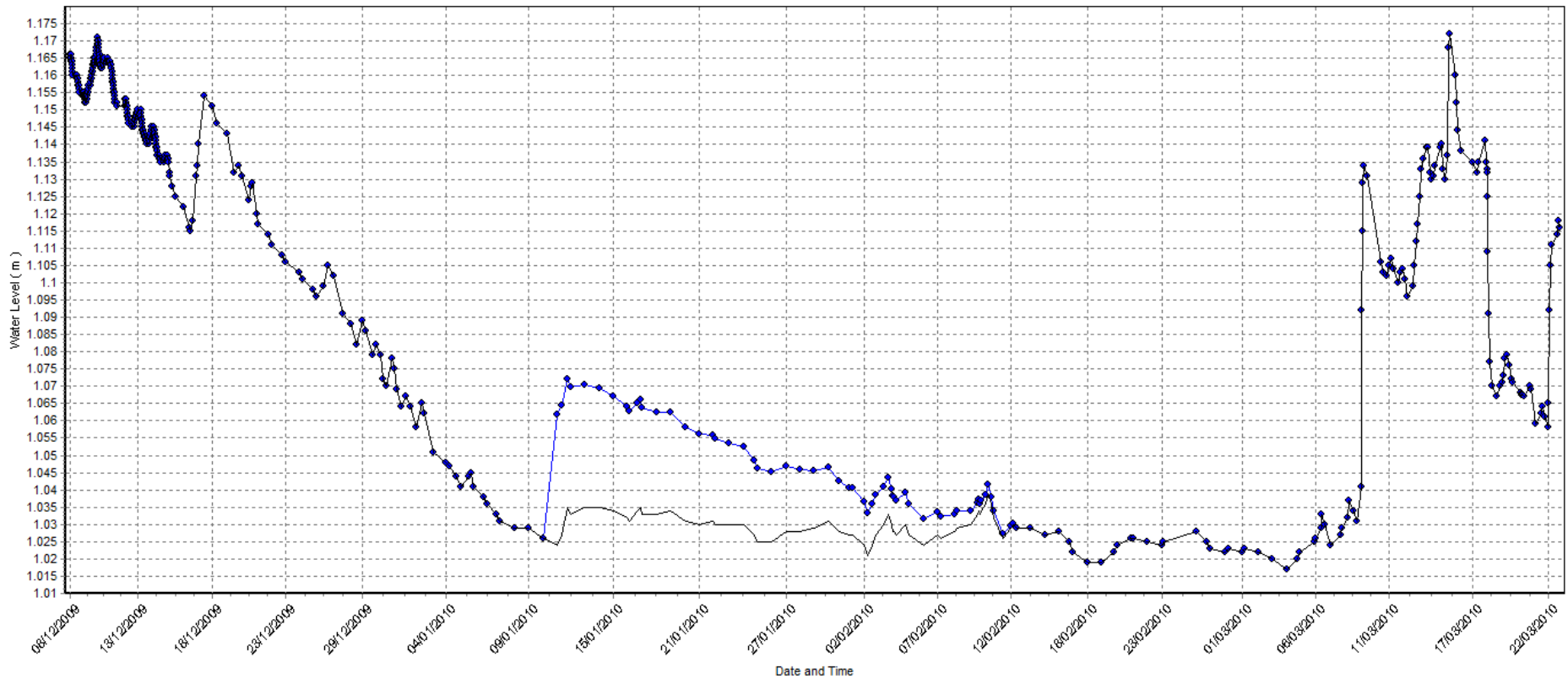
WaterBase Graphical Editor

WaterBase Graphical Editor toolbar and settings:

- Select Point
- Select Block
- Move
- Move To
- Add Points
- Draw
- Draw Line
- Zoom
- Scroll
- Refresh
- Undo
- Redo
- Save
- Print

Extend Left ↑ ↓ Extend Right ↑ ↓ Line Size: 2 Point Size: 4 Change Parameters...

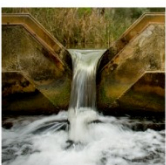
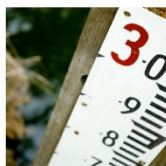
A5030502(SCOTT CREEK @ Scott Bottom)
Total Period Available : 08/12/2009 13:15:00 To 23/03/2010 12:35:00
This graph is showing the period : From 29/09/2009 To 30/09/2010
Number of points: 466





Easy WDTF Transfer to BoM

- WaterBase includes an inbuilt WDTF transfer tool
- Can automatically or manually upload data to Bureau of Meteorology
- Can Import data in WDTF directly to the Database (in development)
- Automatic Schedules - upload to the BoM via FTP



Data Export and Import

- Import and Export to and from a multitude of formats via it's powerful data mapping tool
- Out-of-the-box mapping for common water data transfer formats (eg AWQC WQ , Hydstra)
- Mapping editor for creating custom import/export functions
- Export from any table to any MS Windows software
- Industry standard SQL access





Included Conversions

- By default WaterBase includes the following conversions:
 - Water to flow
 - Velocity to flow
 - Flow to flow volumes
 - Water quality concentrations to pollutant loads
 - EC to TDS
 - Turbidity to Suspended Solids
 - Water level to volume (volume tables)
 - Water level to surface area
 - Unit Conversions (SI and Imperial)



Why WaterBase?

- WaterBase was developed by water data experts specifically to work with water related data
- WaterBase fills key functionality and user interface gaps in alternative products
- Inclusion of Water Quality, Quantity and Groundwater Data Storage/Analysis and Reporting in one single package
- The WDS team is made up of water industry professionals AND software engineers allowing for Hydrographic/Hydrological theory to be implemented.
- Open Architecture
- Long term local support





Contact Details

For more on how WaterBase can work for your organisation, contact Bruce Nicholson, Managing Director, Water Data Services:

Email: Bruce.Nicholson@waterdata.com.au

Phone: 011 +61 8 83743522

Web page: www.waterdata.com.au

